

# QUICK SHIP HOMES

Popular home plans designed for faster delivery to your build site









Lindal homes are designed to fit your lifestyle, build site and budget, and engineered to meet requirements for any location or climate worldwide.

## CUSTOM HOMES DESIGNED AND DELIVERED

A continuously refined and updated planning process and product makes Lindal the leading producer of modern custom system-built homes, with a premium materials package delivered direct to your build site.

Lindal's signature style and comfortable living environments are created through post and

beam framing, the warmth of quality woods, open floor plans, and walls of glass that enhance your connection to the natural environment.

Designing and building a custom home is one of the most rewarding experiences of a lifetime. It can also be challenging and time-consuming. Our network

of independent regional Lindal distributors are ready to guide you through each stage of the process. When you're ready, contact your Lindal representative to help you get started on your new home project.

[lindal.com/dealers](https://lindal.com/dealers)

The Most Efficient Way to Build Your Dream Home

# THE LINDAL QUICK SHIP PROGRAM

Since its introduction a few years ago, the Quick Ship program has become a hit with clients who want to start with a pre-planned design and personalize it. Choosing a Quick Ship home can reap dividends in terms of lower cost, shorter time frame, and less stress, while maintaining Lindal's core values of design flexibility,

efficiency and cost predictability.

Lindal has created a base specification – with pre-defined layouts, materials, and engineering – for every Quick Ship home. The base spec allows for faster pricing, enables easy comparison of various Quick Ship designs, and reduces drafting and engineering expense.

The shape and dimensions of the building envelope still cannot be changed. However, interior layouts can be modified to suit your needs (including moving exterior windows and doors), and you may opt for any of the hundreds of Lindal material options to further personalize your design.







Custom Cedar - 41559 NY





Custom Ash - 42066 WI



# FREQUENTLY ASKED QUESTIONS

The Quick Ship program features a collection of best-selling classic and modern plans, already drawn for efficient pricing and faster delivery. Choose from a menu of optional revisions to personalize your home in a cost-effective manner. Quick Ship homes are sold at a discount – subject to certain conditions – and can ship much faster than our more customized home packages.

## **Can I make changes to a Quick Ship?**

Yes, limited specific changes are allowed. See the sidebar for a list of allowable, optional changes. Please note, while the home will still qualify as a Quick Ship if these changes are made, any changes to the original plan will incur design time/costs and can potentially lengthen the delivery time.

## **What factors impact eligibility?**

Environmental factors, local regulations, and site restrictions, among other things, can impact whether a Quick Ship home will work in your area. Please ask your Lindal representative if the home you like meets the requirements of your location.

## **What changes cannot be made to a Quick Ship home?**

No changes may be made to the home's footprint. The term footprint refers to the boundaries of the exterior walls or covered roof area of the home.

## **Can I still order a home from the list if it doesn't meet the Quick Ship requirements?**

Yes, you can still purchase any home from the list. However, if it doesn't meet the requirements, this can impact the cost and timeline for design, engineering, delivery and construction.

## **How can I save the most on a Quick Ship home?**

Choose our "base price specification" for siding, trim, windows, and doors to get the best value from the program.

## **Standard Quick Ship Selections**

- Crawl Space
- Slab on Grade
- Lower Level

## **Optional Modifications**

- Remove detached garage
- Remove decks, porches, or patios
- Window and door specifications
- Change/add/delete interior trim and liner
- Change/add/delete siding, fascia, soffit locations and pre-stain options
- Change interior door specifications and door hardware
- Change deck, stair, and railing specifications

For maximum savings, ask your Lindal representative for base price specifications on any Quick Ship plan. Please note: Delivery schedules can be impacted by local or regional regulations; please consult your dealer for details.





ASH 1593 is a modern home with a classic profile. The design nods to farmhouse style with a series of connected barn-like structures. This is one of our most popular homes, with walls of glass on the view side, a single-story layout, and a flat-roofed entry separating the public and private spheres.



ASH 1593

2 BEDS | 2.5 BATHS  
1593 LIVING SQ. FT.

STORAGE LOFT 320 SF  
GARAGE 620 SF  
61' X 61'







ASH 2129 includes an often-requested modification to the Ash 1593, expanding the kitchen pantry and adding a private office/bonus room and bedroom off the primary living area.



ASH 2129

3 BEDS | 2 BATHS  
OFFICE

2129 LIVING SQ. FT.

STORAGE LOFT 383 SF  
GARAGE 770 SF  
78' X 66'







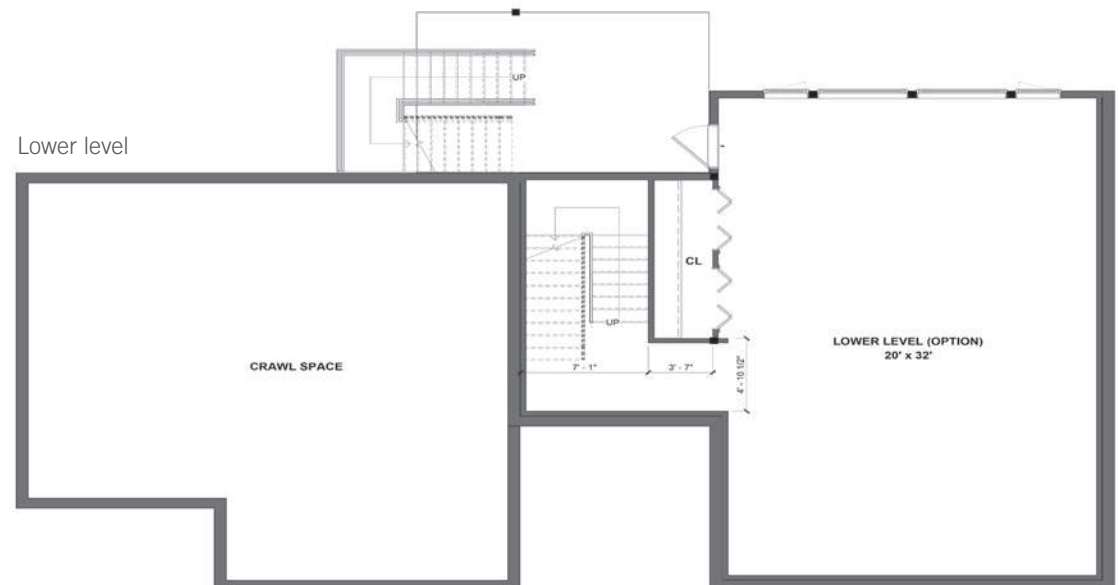
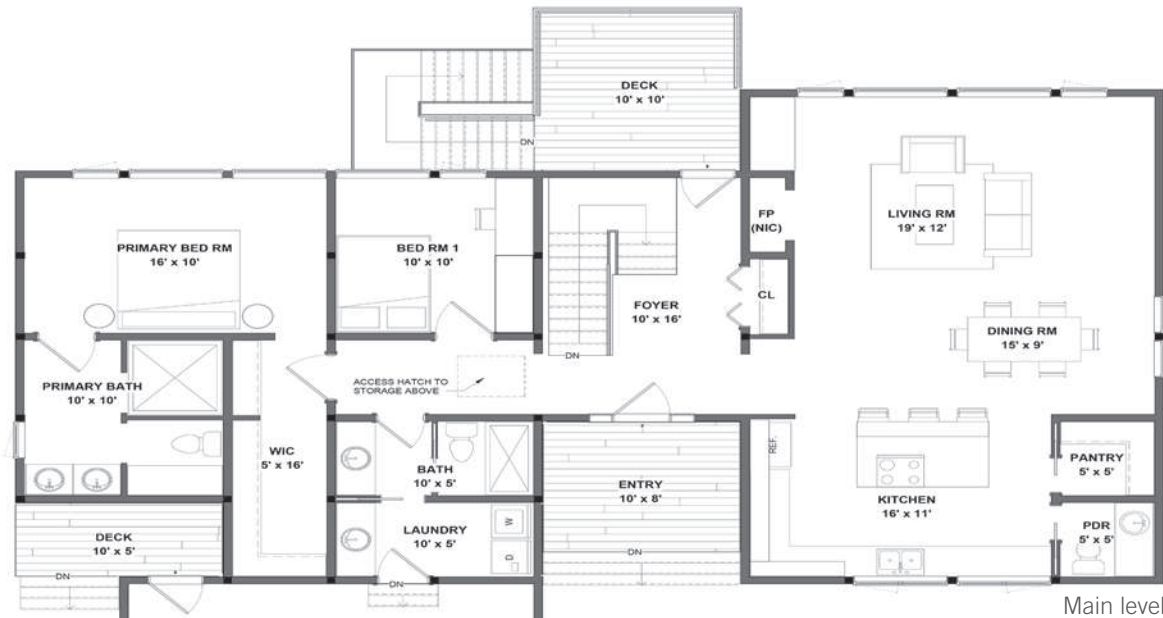
ASH 2530 is perfect for a sloped lot, adding a daylight lower level to the Ash 1593 design. A variety of exterior siding materials and colors are available.



# ASH 2530

2 BEDS | 2.5 BATHS  
 MAIN LEVEL 1588 SF  
 LOWER LEVEL 942 SF  
**2530 LIVING SQ. FT.**

STORAGE LOFT 320 SF  
 GARAGE 620 SF  
 61' X 61'







ASH 3457 adds a lower level to the Ash 2129 design. This four bedroom, three bath home includes a spacious volume on the lower level, accessible to the outside, that can be used as a rec room, media room, or additional living room.



# ASH 3457

4 BEDS | 3 BATHS  
 MAIN LEVEL 2134 SF  
 LOWER LEVEL 1323 SF  
 OFFICE | MEDIA ROOM  
**3457 LIVING SQ. FT.**

GARAGE 770 SF  
 78' X 55'







ASPEN 1283 brings the best of Lindal and the Elements design system together in a simple but striking small home. Just shy of 1,300 square feet, this compact home feels spacious due to its low-pitched roof, open-beamed ceilings, and walls of windows that open the space to the outdoors.



ASPEN 1283

3 BEDS | 2 BATHS  
1283 LIVING SQ. FT.

OPTIONAL GARAGE 782 SF  
55' X 28'







CASCADE 3511 has a dramatic butterfly roof as the ultimate design element. Both aesthetic and functional, this feature provides visual interest and allows for higher perimeter walls and a band of clerestory windows for greater light penetration through the interior. A studio sits above the garage. This home easily adapts to country or urban living.



# CASCADE 3511

4 BEDS | 3.5 BATHS  
 MAIN LEVEL 2206 SF  
 UPPER LEVEL 1305 SF  
 STUDIO APARTMENT | OFFICE  
**3511 LIVING SQ. FT.**

GARAGE 615 SF  
 72' X 61'



Main level

Upper level







CASCADE 4951 adds a lower level to the Cascade 3511, expanding the home to almost 5,000 square feet. The plan adds 1,510 square feet of open space beneath the main floor and is ideal for a sloped lot.



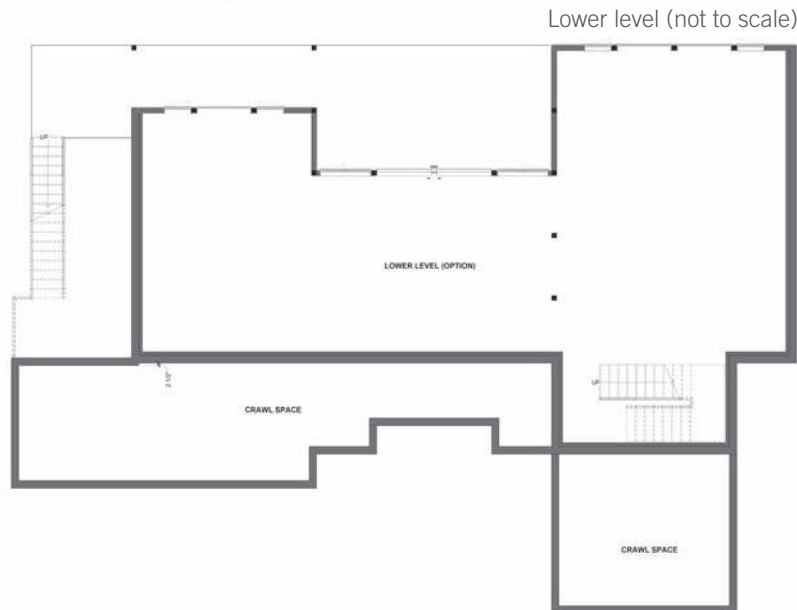
# CASCADE 4951

4 BEDS | 3.5 BATHS  
 MAIN LEVEL 2206 SF  
 UPPER LEVEL 1305 SF  
 LOWER LEVEL 1440 SF  
 STUDIO APARTMENT | OFFICE  
**4951 LIVING SQ. FT.**

GARAGE 615 SF  
 72' X 61'



Main level



Lower level (not to scale)



Upper level





CEDAR 1283 offers one-level living in a modest-sized residence. This home is zoned beautifully to accommodate a variety of lifestyles. The communal zone and private master suite are linked by a central entry. Two bedrooms with an office/third bedroom option and two baths in a compact and functional 1,283 square feet. Stairs leading to a lower daylight basement level may be added, as well as an optional garage.



# CEDAR 1283

3 BEDS | 2 BATHS  
1283 LIVING SQ. FT.

OPTIONAL GARAGE 782 SF  
55' X 28'







SARGASSO 2254 is a ranch-style house with an efficient one-level floor plan. This home exudes a spirit of comfort and ease. A large open gathering area allows for informal seating and relaxing or eating before a roaring fire. The expansive wall of windows and glass sliding door offers easy access to the deck areas from the living room and allows family and guests to enjoy the outdoors, day or night, rain or shine.



SARGASSO 2254

3 BEDS | 2.5 BATHS  
OFFICE

2254 LIVING SQ. FT.

OPTIONAL GARAGE 781 SF  
77' X 55'







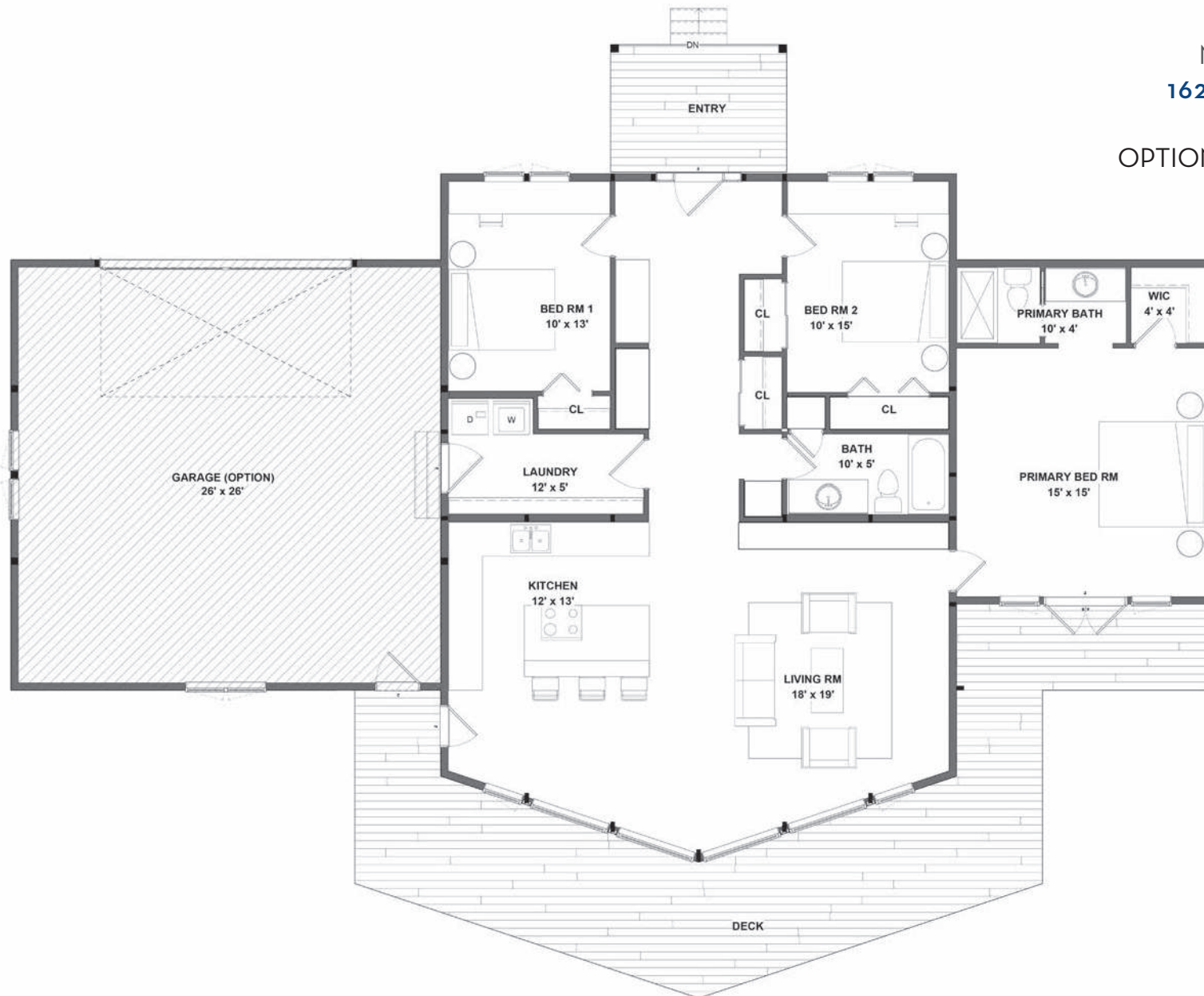
BAYSIDE 1621 features a dramatic prow front of glass in the open great room/dining/kitchen area. The side wing is dedicated to a private primary bedroom suite. Modest in size at just over 1,600 square feet, the one-floor design feels much bigger due to its high ceilings and light-filled interior.



## BAYSIDE 1621

3 BEDS | 2 BATHS  
MAIN LEVEL 1621 SF  
**1621 LIVING SQ. FT.**

OPTIONAL GARAGE 711 SF  
75' X 59'







Custom Cedar - 41559 NY



An aerial photograph of a dense forest. The trees are mostly green, with some showing yellow and orange hues, suggesting autumn. The forest is thick and covers a hillside.

# HOMEOWNER variations

This next section presents some of the original Lindal homes that inspired the Quick Ship designs.

These homes can give you some great ideas for siding, trim, and interior design as you start planning your Quick Ship home. The photographs shown include Lindal options and additions that may differ from the Quick Ship versions. Please consult your Lindal dealer and the Quick Ship specification sheet for the design, snow load, and Lindal materials of these homes.

Find the elements of design and style that speak to you. Then let your local representative help you bring them home.





42066 WI

"I love the 'understated' front of the home and then you walk in and turn into the great room and it's like wow. Not ostentatious - just gracefully beautiful." — Dawn Hoyt



42066 WI



41842 WI



42066 WI



# ASH

custom  
variations



"The Ash is a very classic, clean lined design, with traditional styling elements used in a contemporary way. It's got almost a 'throwback' Americana feel to it. I think a lot of people are yearning for something uniquely American and the American Farmhouse evokes that nostalgia. I think people want to feel more connected to the land and nature – whether they realize it or not." — Dawn Hoyt





Monopitch roofs rise in opposite directions, each capping a large private suite. An accessory dwelling unit is located above the garage and features its own private outdoor space.

# CASCADE

custom  
variations





# SARGASSO

custom  
variations

Disciplined symmetry and an  
interplay of solids and voids  
exude strength in the Sargasso.







# BAYSIDE

custom  
variations

Drama and comfort come together in the Bayside. The nearly all-glass view side and high ceilings offer spectacular vistas.







This flexible design can be modified  
in a number of ways.

# CEDAR

custom  
variations







Custom Sargasso - 41458 NY



Below are links to further information and resources as you start planning your Lindal home. You can also contact our internal sales support team anytime at [sales@lindal.com](mailto:sales@lindal.com), or by calling 1-888-454-6325.

## NEXT STEPS

### **View All Quick Ship Home Designs**

[lindal.com/floor-plans/quick-ship](https://lindal.com/floor-plans/quick-ship)

See our extensive portfolio of Quick Ship homes.

### **View All Home Styles**

[lindal.com/floor-plans](https://lindal.com/floor-plans)

Lindal has hundreds of floor plans and home styles available. Choose or modify an existing home design, or start from scratch and create your own.

### **Custom Home Design Services**

[lindal.com/om-studio-design](https://lindal.com/om-studio-design)

Work with architectural design professional Aris Georges of OM Studio to create a unique custom home.

### **Frank Lloyd Wright-Inspired Homes**

[lindal.com/imagine](https://lindal.com/imagine)

In an exclusive partnership with the Frank Lloyd Wright Foundation, Lindal presents the Imagine Series: Home designs inspired by architect Frank Lloyd Wright's original masterpieces, updated for modern Living.

### **View Our Digital Plan Books**

[lindal.com/ebooks](https://lindal.com/ebooks)

Register to to gain access to all Lindal's online plan books, including our portfolio of architect-designed homes, our classic designs, our small homes and ADU series, a look at the Alpha A-frame, and much more.

### **Purchase a Plan Book**

[planbooks.lindal.com](https://planbooks.lindal.com)

Our plan books and calendars are available for sale in our online store.

### **Attend a Webinar**

[lindal.com/events](https://lindal.com/events)

Lindal offers introductory webinars on modern homes design, custom home design, and our Lindal Imagine Series. Sign up Today!

### **Find Your Local Lindal Representative**

[lindal.com/dealers](https://lindal.com/dealers)

For pricing estimates, site visits and experienced guidance throughout your new home project, your local Lindal dealer is an invaluable resource. Contact the Lindal dealer closest to you for personalized, one-on-one support.





Custom Sargasso - 41458 NY

 **Lindal**  
CEDAR HOMES

The architectural designs, drawings, and images in this book will give you new ideas about how your Lindal home will look. All of the designs, drawings and images belong to Lindal Cedar Homes, Inc. They are protected by copyright law, and you may use them only to design and construct a home using Lindal's premium building materials. Any other use of the designs, drawings, photographs and images in this book, including without limitation the preparation of new plans based on Lindal's plans, is strictly prohibited. Renderings and photographs may show premium upgrades available from Lindal. Due to individual customization some photographs may vary from the floor plan. Plan scale varies due to the graphic design and printing process. Consult your local independent Lindal dealer for updates and pricing. All rights reserved.

Photography on the cover and pages 5, 28, 34, 35 by John Muggenborg.

1352/1-24 Volume 1 ©2024 Lindal Cedar Homes, Inc. Printed in the USA